



Ruckus Wireless™ SmartCell Gateway™ 200 for SmartZone 3.5

Charging Interface Reference Guide

Part Number: 800-71291-001 Rev A
Published: 21 March 2017

www.ruckuswireless.com

Contents

Copyright Notice and Proprietary Information.....	3
About This Guide.....	4
Document Conventions.....	4
Terminology.....	6
References.....	7
Legend.....	8
Related Documentation.....	8
Online Training Resources.....	8
Documentation Feedback.....	9
Charging Gateway Function	
Overview.....	10
CGF Interface.....	11
CDR Packet Transfer and Formats	
CDR Transport by GTP'.....	13
Normal CDR Packet Transfer.....	14
Data Transfer Request.....	15
Data Record Packet IE.....	16
Data Transfer Response Message.....	17
Node Alive Request Message.....	17
Node Alive Response.....	18
Redirection Request Message.....	18
Redirection Response Message.....	19
CDR Formats.....	19
S-CDR Type.....	20
W-CDR Type.....	22
W-AN-CDR Type.....	23

Copyright Notice and Proprietary Information

Copyright 2017. Ruckus Wireless, Inc. All rights reserved.

No part of this documentation may be used, reproduced, transmitted, or translated, in any form or by any means, electronic, mechanical, manual, optical, or otherwise, without prior written permission of Ruckus Wireless, Inc. ("Ruckus"), or as expressly provided by under license from Ruckus.

Destination Control Statement

Technical data contained in this publication may be subject to the export control laws of the United States of America. Disclosure to nationals of other countries contrary to United States law is prohibited. It is the reader's responsibility to determine the applicable regulations and to comply with them.

Disclaimer

THIS DOCUMENTATION AND ALL INFORMATION CONTAINED HEREIN ("MATERIAL") IS PROVIDED FOR GENERAL INFORMATION PURPOSES ONLY. RUCKUS AND ITS LICENSORS MAKE NO WARRANTY OF ANY KIND, EXPRESS OR IMPLIED, WITH REGARD TO THE MATERIAL, INCLUDING, BUT NOT LIMITED TO, THE IMPLIED WARRANTIES OF MERCHANTABILITY, NON-INFRINGEMENT AND FITNESS FOR A PARTICULAR PURPOSE, OR THAT THE MATERIAL IS ERROR-FREE, ACCURATE OR RELIABLE. RUCKUS RESERVES THE RIGHT TO MAKE CHANGES OR UPDATES TO THE MATERIAL AT ANY TIME.

Limitation of Liability

IN NO EVENT SHALL RUCKUS BE LIABLE FOR ANY DIRECT, INDIRECT, INCIDENTAL, SPECIAL OR CONSEQUENTIAL DAMAGES, OR DAMAGES FOR LOSS OF PROFITS, REVENUE, DATA OR USE, INCURRED BY YOU OR ANY THIRD PARTY, WHETHER IN AN ACTION IN CONTRACT OR TORT, ARISING FROM YOUR ACCESS TO, OR USE OF, THE MATERIAL.

Trademarks

Ruckus Wireless, Ruckus, the bark logo, BeamFlex, ChannelFly, Dynamic PSK, FlexMaster, Simply Better Wireless, SmartCell, SmartMesh, SmartZone, Unleashed, ZoneDirector and ZoneFlex are trademarks of Ruckus Wireless, Inc. in the United States and other countries. All other product or company names may be trademarks of their respective owners.

About This Guide

This SmartCell Gateway™ (SCG) 200 Charging Interface Reference Guide lists all the interface messages used between the SCG and the Charging Gateway Function (CGF) server over a Ga interface. Gateway Function (CGF) server only when the SCG acts a trunk terminating gateway for managing the Ruckus Wireless SmartCell Gateway.

This guide is written for service operators and system administrators who are responsible for managing, configuring, and troubleshooting Ruckus Wireless devices. Consequently, it assumes a basic working knowledge of local area networks, wireless networking, and wireless devices.

NOTE Refer to the release notes shipped with your product to be aware of certain challenges when upgrading to this release.

Most user guides and release notes are available in Adobe Acrobat Reader Portable Document Format (PDF) or HTML on the Ruckus Wireless Support Web site at <https://support.ruckuswireless.com/contact-us>.

Document Conventions

[Table 1: Text conventions](#) on page 4 and [Table 2: Notice conventions](#) on page 5 list the text and notice conventions that are used throughout this guide.

Table 1: Text conventions

Convention	Description	Example
message phrase	Represents messages displayed in response to a command or a status	[Device Name] >
user input	Represents information that you enter	[Device Name] > set ipaddr 10.0.0.12
user interface controls	Keyboard keys, software buttons, and field names	Click Create New
Start > All Programs	Represents a series of commands, or menus and submenus	Select Start > All Programs
ctrl+V	Represents keyboard keys pressed in combination	Press ctrl+V to paste the text from the clipboard.
screen or page names		Click Advanced Settings . The Advanced Settings page appears.

Convention	Description	Example
command name	Represents CLI commands	
parameter name	Represents a parameter in a CLI command or UI feature	
<i>variable name</i>	Represents variable data	<i>{ZoneDirectorID}</i>
filepath	Represents file names or URI strings	http://ruckuswireless.com

Table 2: Notice conventions

Notice type	Description
NOTE	Information that describes important features or instructions
CAUTION!	Information that alerts you to potential loss of data or potential damage to an application, system, or device
WARNING!	Information that alerts you to potential personal injury

Terminology

The table lists the terms used in this guide.

Table 3: Terms used in this guide

Terminology	Description
AAA	Authentication, Authorization, and Accounting
AVP	Ruckus Vendor specific attribute Pair
BMD	Billing Mediation Device is a network component in a telecommunications network that receives, processes, reformats and sends information to other formats between network elements.
CDF	Charging Data Function
CDR	A formatted collection of information on chargeable events used for accounting and billing. For example, call set-up, call duration and amount of data transferred.
CGF	Charging Gateway Function
CTF	Charging Trigger Function
DRT	Data Record Transfer
Ga	Reference point between a CDF and the CGF for CDR transfer
GGSN	Gateway GPRS Support Node
GTP	GPRS Tunneling Protocol
GTP'	GPRS protocol, used for CDR transport. It is derived from GTP with enhancements to improve transport reliability necessary for CDRs
IMSI	International Mobile Subscriber Identity
IP-CAN	IP Connectivity Access Network
P-GW	Packet Data Network Gateway
PCN	Packet switched Core network Node (SGSN, GGSN, S-GW, P-GW)
PDN	Packet Data Network
S-CDR	SGSN Call Detail Record
SGSN	Serving GPRS Support Node
UI	User Interface

Terminology	Description
UMTS	Universal Mobile Telecommunications Service
WAG	WiFi Access Gateway
W-CDR	WLAN Call Detail Record

References

[Table 4: References used in this guide](#) on page 7 lists the specifications and standards that are referred to in this guide.

Table 4: References used in this guide

No.	Reference	Description
1	TS 32.295 Release 8	<ul style="list-style-type: none"> Charging management Charging Data Record (CDR) transfer
2	TS 32.252 Release 8	<ul style="list-style-type: none"> Charging management Wireless Local Area Network (WLAN) charging Description about W-CDR
3	TS 32.251 Release 8	<ul style="list-style-type: none"> Charging management Packet Switched (PS) domain charging. Description about S-CDR
4	TS 32.240 Release 8	<ul style="list-style-type: none"> Charging management Charging architecture and principles
5	TS 32.298 Release 8	<ul style="list-style-type: none"> Charging management Charging Data Record (CDR) parameter description
6	IETF RFC 768 (1980)	User Datagram Protocol (STD 6)

About This Guide

Legend

Legend

Table 5: Legends/presence code used in this guide on page 8 lists the legend/presence code used in this guide.

Table 5: Legends/presence code used in this guide

Legend / Presence	Description
M	Mandatory
O	Optional
C	Conditional
O _M	Operator Provisionable - Attributes that operators have provisioned to be included for all conditions
O _C	Operator Provisionable Conditional (OC): Attributes that operators have provisioned to be included in the CDR provided certain conditions are met

Related Documentation

For a complete list of documents that accompany this release, refer to the Release Notes.

Online Training Resources

To access a variety of online Ruckus Wireless training modules, including free introductory courses to wireless networking essentials, site surveys, and Ruckus Wireless products, visit the Ruckus Wireless Training Portal at:

<https://training.ruckuswireless.com>.

Documentation Feedback

Ruckus Wireless is interested in improving its documentation and welcomes your comments and suggestions.

You can email your comments to Ruckus Wireless at: docs@ruckuswireless.com

When contacting us, please include the following information:

- Document title
- Document part number (on the cover page)
- Page number (if appropriate)
- For example:
 - Charging Interface Reference for SmartZone 3.5
 - Part number: 800-71291-001
 - Page 88

Charging Gateway Function

This chapter consists:

- [Overview](#) on page 10
- [CGF Interface](#) on page 11

Overview

This reference guide describes the interface between SCG and Charging Gateway Function (CGF) server only when the SCG acts as a trunk terminating gateway.

This guide lists all the interface messages that are used between the SCG and CGF server (Ga Interface).

NOTE This guide does not provide design details of the SCG's CDF functionality for the interface requirements.

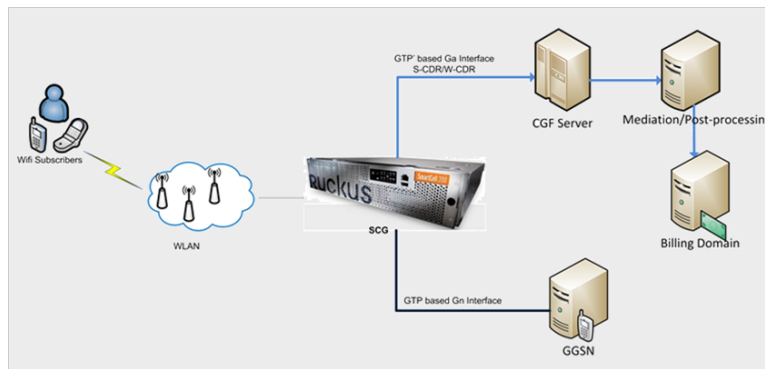
NOTE Refer to [About This Guide](#) on page 4 for the conventions used in this guide.

CGF Interface

The Ga interface over GTP' (prime) from the SCG to CGF server, delivers the CDR generated at the SCG.

The SCG plays the CTF role of collecting the chargeable event information for TTG sessions, i.e., session towards GGSN/PGW. The SCG as Charging Data Function (CDF) constructs the CDR's, builds data transfer request messages and sends it over to the Ga interface (CGF server(s) configured at the SCG) as defined in 3GPP TS 32.295. Generated CDR's are sent to CGF server and or can be stored locally, based on configuration in the SCG user interface. By definition, dealing with CDRs only implies that Ga is solely related to offline charging (as seen in [Figure 1: Offline charging architecture](#) on page 11).

Figure 1: Offline charging architecture

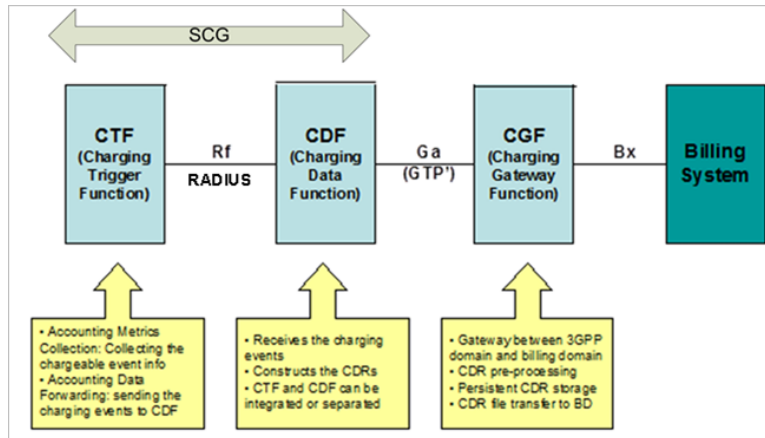


For billing purposes of data services, the SCG together with the hosted AAA server emulates a cellular SGSN. The above figure shows the logical deployment of the SCG in a billing domain. The integration enables total reuse of the operator's existing packet billing systems for GPRS/UMTS.

The SCG on the data path measures the user traffic packets (uplink/downlink - per-session). The module in the SCG (TTG control plane) reports these measurements to the SCG hosted AAA server [RAC] using RADIUS accounting messages. The AAA server [RAC] converts the RADIUS accounting records to standard formats of S-CDR (SGSN Call Detail Record) or W-CDR (WLAN Call Detail Record) based on the configuration specified in the user interface.

The SCG can either forward the CDRs directly to CGF(s) and/or store them locally for retrieval by an external system using FTP. On receiving the CDRs from the SCG, the billing domain and BMD determines the layers of charging and charging rules. Charging rules are based on the operator's charging rules, which are logical blocks of offline charging architecture. See [Figure 2: Logical blocks of offline charging architecture](#) on page 12.

Figure 2: Logical blocks of offline charging architecture



In the data offload solution, SCG plays the CTF (Charging Trigger Function) and CDF (Charging Data Function) in a combined role. As CTF, it collects the chargeable event information including the connecting time and transferred packets and as CDF, it converts the RADIUS accounting information into CDRs. The SCG supports the standard Ga interface based on GTP' for transferring the CDRs to CGF. The SCG also generates CDR's for accounting messages initiated by AP. For direct IP access session (PDG sessions), the SCG generates W-AN-CDR's for accounting messages initiated from AP, which acts as CDF module.

CDR Packet Transfer and Formats

This chapter contains:

- [CDR Transport by GTP'](#) on page 13
- [Normal CDR Packet Transfer](#) on page 14
- [CDR Formats](#) on page 19

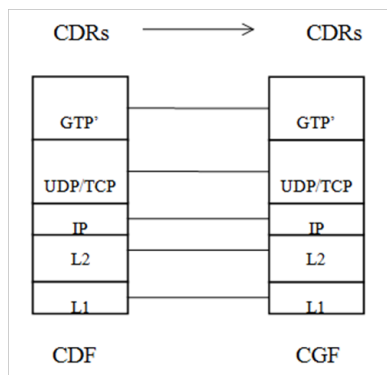
CDR Transport by GTP'

The transport protocol associated to the Ga reference point, provides the function for transferring CDRs from the SCG (CDF) to CGF, which is known as GTP' (TS 29.060).

Refer to [Figure 3: Stack layer between CDF and CGF](#) on page 13 .

Standard UDP port 3386 is used for delivering CDR's to the CGF server. GTP message DRT (Data Record Transfer) request is used for delivering data records to the CGF server.

Figure 3: Stack layer between CDF and CGF



Normal CDR Packet Transfer

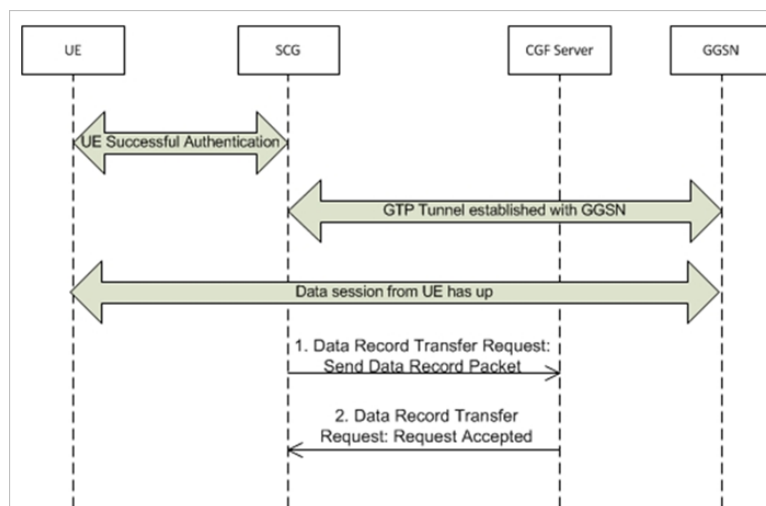
CDR generated at the SCG is packed in DRT messages with the packet transfer command having the value - send data record packet.

Based on the accounting interim message configuration, the SCG sends CDR's as a DRT message to the CGF server for a given user session. If the accounting interim message interval is not configured, the SCG sends the DRT message after the data session ends, which is an accounting stop message.

The CDR receiving entity (CGF) sends a confirmation of receiving the packet to the CDF. The confirmation is sent by using the data record transfer response message, with the cause value request accepted.

[Figure 4: CDR transfer between the SCG and CGF server](#) on page 14 shows the sequence of successful CDR transfers between the SCG and CGF server.

Figure 4: CDR transfer between the SCG and CGF server



This section covers:

- [Data Transfer Request](#) on page 15
- [Data Record Packet IE](#) on page 16
- [Data Transfer Response Message](#) on page 17
- [Node Alive Request Message](#) on page 17
- [Node Alive Response](#) on page 18
- [Redirection Request Message](#) on page 18
- [Redirection Response Message](#) on page 19

NOTE Reference for the below messages is [Table 4: References used in this guide](#) on page 7 TS 32.295 Release 8.

Data Transfer Request

This message is sent from the SCG to CGF server.

This message is used for transmitting CDR(s) to CGF, where CDRs are placed in the data record packet information element. The below table lists the message attributes.

Table 6: Data transfer request attributes

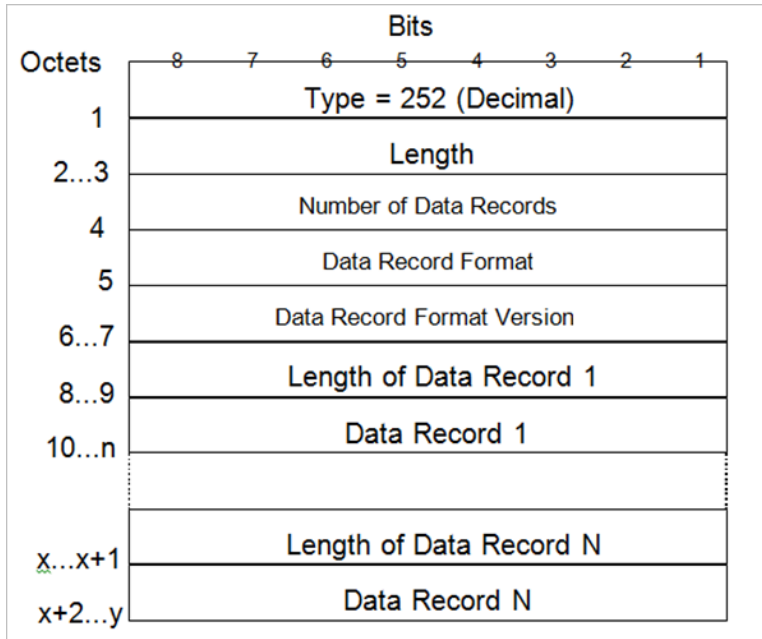
Attribute	Presence	Type	Description
Packet Transfer Command	M	Variables	This attribute is present in the DTR message sent from the SCG. The value is set to 1 in normal DTR message with CD (send data record packet).
Data Record Packet	C	Variables	This attribute is present in the DTR message sent from the SCG. It contains one or more CDR's.
Sequence Numbers of Released Packets	C	NA	Not part of the DTR message sent from the SCG.
Sequence Numbers of Canceled Packets	C	NA	Not part of the DTR message sent from the SCG.
Private Extension	C	NA	Not part of the DTR message sent from the SCG.

Data Record Packet IE

The data record packet IE contains the CDR's generated at the SCG.

It can have single or multiple CDR's, based on the user interface configuration specified in the SCG. The below figure, shows the format of the data record packet.

Figure 5: Data Record Packet IE



Data Transfer Response Message

This message is sent from CGF server to the SCG as a response for data record transfer request from the SCG.

The below table lists the message attributes.

Table 7: Data transfer response attributes

Attributes	Presence	Types	Description
Cause	M	Variable	This attribute is present in the response messages sent from the CGF. The value is set to 1 for successful responses.
Request Responded	M	Variable	This attribute is present in the response messages sent from the CGF. The value is set to 5 for successful responses.
Private Extension	C	NA	This attribute is not part of the response message sent from CGF.

Node Alive Request Message

This message is sent from CGF server to the SCG or from the SCG to CGF server during a SCG restart.

This request message informs that a node in the network has started its service. For example, a node could start its service due to a break down because of software or hardware maintenance or because of an error. The below table lists the message attributes.

Table 8: Node alive request attributes

Attribute	Presence	Type	Description
Node Address	M	IP Address	IP address of the CGF server for CGF initiated messages. IP address of the SCG for SCG initiated messages.
Alternative Node Address	O	IP Address	This attribute is not present in the response message sent from the CGF server.
Private Extension	O	NA	This attribute is not present in the response message sent from the CGF server.

Node Alive Response

This message is sent from the SCG to CFG server in response to the received node alive request.

The below table lists the message attributes.

Table 9: Terms used in this guide

Attribute	Presence	Type	Description
Private Extension	O	NA	This attribute is not present in the response message sent from the SCG to the CGF server.

Redirection Request Message

This message is sent from the CGF server to the SCG.

The CGF server sends this message when it is unable to handle the CDR's from the SCG. Reasons could be maintenance or overload at the CGF server or the next node in the chain (such as the mediator device or a billing computer) has lost its connection to the CGF server. The below table lists the message attributes.

Table 10: Redirection request attributes

Attribute	Presence	Type	Attributes
Cause	M	Variable	This attribute results in the SCG stops sending CDR's to the CGF server until it receives the CGF server sends an indication of a node alive request. Value ranges from 1-5.
Address of Recommended Node	O	IP address (IPv4)	IP address of the recommended CGF server. A new DRT is sent to this server.
Alternative Address of the Recommended Node	O	IP address (IPv6)	This is an alternate IP address of the recommended CGF server. The SCG does not consider this address.
Private Extension	O	N/A	This attribute may not be present in the received message.

Redirection Response Message

This message is sent from the SCG to the CGF server as a response for redirection request from the CGF server.

The below table lists the message attributes.

Table 11: Redirection response attributes

Attribute	Presence	Type	Description
Cause	M	Variable	The SCG sets the cause value to 1 - <i>Request Accepted</i> , provided the IP address of the CGF server is configured in the SCG and is seen in the active state.
Private Extension	O	N/A	This attribute may not be present in the received message.

CDR Formats

3GPP specification defines the WLAN-CDR (TS 32.252 Release 8) and S-CDR (TS 32.251 Release 8), which mentions the optional fields defined by the operator.

To support these, the SCG user interface (UI) provides these options for generating the CDRs. The operator can select the CDR type to be generated by configuring the SCG UI. Based on the configuration, the SCG includes or excludes these fields when generating W-CDR/S-CDR. This section defines the following types of formats generated by the SCG:

- [S-CDR Type](#) on page 20
- [W-CDR Type](#) on page 22
- [W-AN-CDR Type](#) on page 23

S-CDR Type

The below table lists the attributes of S-CDR type generated by the SCG based on 3GPP specification (TS 32.251).

Table 12: S-CDR attributes

Attribute	Presence	Description
Record Type	O _M	SGSN IP-CAN bearer identity
Served IMSI	O _M	IMSI of the served party.
SGSN Address	O _M	IP address of the current SGSN.
Charging ID	O _M	IP-CAN bearer identifier used in identifying the IP CAN bearer present in various records, created by PCNs.
GGSN Address Used	O _M	The control plane IP address of the P-GW currently used. The P-GW address is always the same for an activated IP CAN bearer.
Access Point Name Network Identifier	O _M	The logical name of the connected access point for external packet data network identifier (part of APN).
PDP Type	O _M	PDP type, which could be: <ul style="list-style-type: none"> • IP • PPP • IHOSS • OSP
Served PDP Address	O _M	PDP address of the served IMSI - IPv4 address or IPv6 prefix. This parameter is present except when the PDP type is PPP and if the dynamic PDP address assignment is used.
List of Traffic Data Volumes	O _M	A list of: <ul style="list-style-type: none"> • Changes in charging conditions for the IP CAN bearer, where each change is time stamped. • Charging conditions is categorized as per traffic volumes. For example, per tariff period - initial and subsequent changes. • QoS and its corresponding data volumes.
Record Opening Time	O _M	Time stamp when IP CAN bearer is activated in the current SGSN or it is the record opening time of subsequent partial records.

Attribute	Presence	Description
Duration	O _M	Duration of the current record in SGSN.
Cause for Record Closing	O _M	The reason for record closures from the current SGSN.
Diagnostics	O _M	Detailed reason for releasing the connection.
Record Sequence Number	C	Partial record sequence number in the current SGSN. It is present only in case of partial records.
Node ID	O _M	Name of the recording entity.
Local Record Sequence Number	O _M	Consecutive record number created by the current node. The number is allocated sequentially, including all CDR types.
APN Selection Mode	O _M	Index indicating the APN selection.
Access Point Name Operator Identifier	O _M	Operator identifier of the APN.
Served MSISDN	O _M	Primary MSISDN of the subscriber.
Charging Characteristics	O _M	Charging characteristics applied to the IP CAN bearer.

W-CDR Type

The following table lists the attributes of W-CDR type generated by the SCG based on 3GPP specifications (TS 32.252 Release 8).

Table 13: W-CDR attributes

Attribute	Presence	Description
Record Type	M	WLAN PDG record.
Served IMSI	M	IMSI of the served party.
Served MSISDN	O _M	Primary MSISDN of the subscriber.
PDG Address	M	IP address of the PDG used.
Node ID	O _M	Name of the recording entity, which is configured in the user interface of the SCG.
Serving WAG Address	M	Serving WAG address used in the current record.
WAG PLMN ID	O _M	WAG PLMN identifier (MCC and MNC) used in the current record.
Serving AAA/Server/Proxy Address	M	Serving AAA server /proxy address. It is the SCG IP address, which acts as the AAA server.
Charging ID	M	PDG charging identifier for correlating WLAN
WLAN Session ID	M	WLAN session identifier for correlating WLAN generated information to the PDG.
Access Point Name Network ID	O _M	Logical name of the connected access point to the external packet data network identifier, which is part of APN.
Charging Characteristics	M	This attribute is applied to the PDP context.
Charging Characteristics Selection Mode	O _M	This attribute contains information on selection of charging characteristics.
Record Opening Time	M	Time stamp when end-to-end tunnel is activated in the current PDG or it is the record opening time of subsequent partial records.
Duration	M	Duration of the current record in PDG.
Cause for Record Closing	M	The reason for record closure from the current PDG.
Local Record Sequence Number	O _M	Consecutive record number created by the current node. The number is allocated sequentially and includes all CDR types.
Diagnostics	O _M	Detailed reason for releasing the connection.

W-AN-CDR Type

The following table lists the attributes of W-AN-CDR type generated by the SCG for PDG sessions. This is based on 3GPP specifications (TS 32.252 V8.1.0 (2011-09)).

Table 14: W-AN_CDR attributes

Attribute	Presence	Description
Record Type	M	WLAN direct IP access CDR.
Served IMSI	M	IMSI to be retrieved from the username.
Operator Name	M	Hotspot operator name as defined in the SCG (accounting profile name).
Charging ID	M	Accounting Session-ID received from AP for AP initiated messages.
NAS Port	C	Attribute value as received in accounting message from AP.
NAS Port ID	C	Attribute value as received in accounting message from AP.
NAS Port Type	C	Attribute value as received in accounting message from AP.
NAS IP Address	C	Attribute value as received in accounting message from AP.
Data Volume Downlink	C	Attribute value as received in accounting message from AP.
Data Volume Uplink	C	Attribute value as received in accounting message from AP.
Record Opening Time	M	Time stamp as received in accounting message from AP.
Duration	M	Duration of the record.
Cause for Record Closing	M	The reason for record closures.
Node ID	O _M	Name of the recording entity.
Local Record Sequence Number	O _M	Consecutive record number created by the current node. The number is allocated sequentially, including all CDR types.

Index

A

Access Point name network ID [22](#)
Access Point name network identifier [20](#)
Access Point name operator identifier [20](#)
accounting interim message configuration [14](#)
accounting interim message interval [14](#)
Address of recommended node [18](#)
Alternative address of the recommended node [18](#)
Alternative Node Address [17](#)
APN selection mode [20](#)

B

billing domain [11](#)

C

Cause [18–19](#)
Cause for record closing [20, 22–23](#)
CDR Formats [19](#)
CDR transfer between the SCG and CGF server [14](#)
CDR Transport by GTP [13](#)
CGF [13](#)
Charging characteristics [20, 22](#)
Charging characteristics selection mode [22](#)
Charging Data Function [11](#)
Charging Data Function (CDF) [11](#)
Charging Gateway Function (CGF) [10](#)
Charging ID [20, 22–23](#)
Charging Trigger Function [11](#)
copyright information [3](#)

D

Data record packet [15](#)
Data Record Packet IE [16](#)
Data Record Transfer [13](#)
Data transfer response attributes [17](#)
Data Transfer Response Message [17](#)
Data volume downlink [23](#)
Data volume uplink [23](#)
Diagnostics [20, 22](#)
Duration [20, 22–23](#)

G

GGSN address used [20](#)

L

legal [3](#)
List of traffic data volumes [20](#)

Local record sequence number [20, 22–23](#)
Logical blocks of offline charging architecture [11](#)

N

NAS IP address [23](#)
NAS port [23](#)
NAS Port ID [23](#)
NAS port type [23](#)
Node Address [17](#)
node alive response [18](#)
Node ID [20, 22–23](#)
Normal CDR Packet Transfer [14](#)

O

Offline charging architecture [11](#)
Operator name [23](#)

P

Packet transfer command [15](#)
PDG address [22](#)
PDP type [20](#)
Private extension [15, 18–19](#)
Private Extension [17](#)

R

RADIUS accounting messages [11](#)
Record opening time [20, 22–23](#)
Record sequence number [20](#)
Record type [20, 22–23](#)
Redirection request attributes [18](#)
Redirection request message [18](#)
Redirection response attributes [19](#)
Redirection response message [19](#)

S

S-CDR attributes [20](#)
S-CDR type [20](#)
Sequence numbers of canceled packets [15](#)
Sequence numbers of released packets [15](#)
Served IMSI [20, 22–23](#)
Served MSISDN [20, 22](#)
Served PDP address [20](#)
Serving AAA/Server/Proxy address [22](#)
Serving WAG address [22](#)
SGSN address [20](#)
SGSN Call Detail Record [11](#)

T

trademarks [3](#)
transport protocol [13](#)
trunk terminating gateway [10](#)

U

user traffic packets [11](#)

W

W-AN_CDR attributes [23](#)
W-AN-CDR type [23](#)
W-CDR attributes [22](#)
W-CDR type [22](#)
WAG PLMN ID [22](#)
WLAN Call Detail Record [11](#)
WLAN Session ID [22](#)



Copyright © 2017. Ruckus Wireless, Inc.
350 West Java Drive, Sunnyvale, CA

www.ruckuswireless.com